

Early
2019 *Fall*



SARA CAMPBELL

Early Fall 2019



*"How beautiful the leaves grow old.
How full of light and color are their last days."*
—John Burroughs (May we all age as leaves do!)

Thank you to the friends and customers who volunteered minutes of their busy days to answer the survey questions we asked this spring. I am sincerely grateful for your invaluable feedback. My team and I read all 1,500+ responses and gathered great insight to your wants and needs! The survey is now available on paper at our boutiques if you're inclined to fill it out.

In our Boston design studio, we put your requests into action immediately. Our first taste of the fall collection introduces more modern top and dress silhouettes while continuing to provide the stretch and comfort pieces you love already. The items in this booklet deliver to our warehouse during July and August when it's hot everywhere, so we paid special attention to our fabrics to offer items you can wear immediately while you "warm up" to fall fashion.

Our limited edition clothing model remains, so please don't hesitate to ask your favorite store manager to locate and ship the items you love if they're elsewhere in the company. Our point of sales system makes this simple and manageable so we can serve you as best as possible. Shipping between our stores is free and gives you an excuse to visit us again! You can reach me at sara@saracampbell.com with your questions or comments, I absolutely love connecting with our shoppers directly.

Marching onward,

COVER:
Pleated skirt ruffle collar dress
SC 419-104
\$328 | 0-14
Silk dupioni imported from India

*Limited edition of 95
(In stores 7/1-7/30)*



Metallic sheath
SC 419-200
\$328 | 0-14
Jacquard imported from France

*Limited edition of 150
(In stores 8/1-8/30)*

Floral embroidered shift
SC 419-106
\$428 | 0-14
Fabric imported from India

*Limited edition of 85
(In stores 7/1-7/30)*



Waist sash shirt dress
SC 419-204
\$288 | 0-14
Imported taffeta

*Limited edition of
115/teal & 50/green
(In stores 8/1-8/30)*





Balloon sleeve shift

SC 419-202

\$298 | 0-14

Jacquard imported
from France

*Limited edition of 110
(In stores 8/1-8/30)*

Box pleat trapeze dress

SC 419-100

\$288 | 0-14

Imported taffeta

*Limited edition of 95
(In stores 7/1-7/30)*



Printed turtleneck shift

SC 419-271

\$258 | XS-XL

Stretch knit imported
from Italy

*Limited edition of 125
(In stores 8/1-8/30)*



Faux fur trim swing dress

SC 419-236

\$258 | XS-XL

Ponte from USA

*Limited edition of 135
(In stores 8/1-8/30)*



A-line knit dress

SC 419-224

\$258 | XS-XL

Ponte from USA

*Limited edition of
75/ruby or 135/admiral
(In stores 8/1-8/30)*



Seamed leopard knit shift

SC 419-228

\$298 | XS-XL

Ponte imported from Italy

*Limited edition of 140
(In stores 8/1-8/30)*



Glen plaid sheath with
asymmetrical tie

SC 419-126

\$298 | 0-14

Imported stretch linen blend

*Limited edition of 145
(In stores 7/1-7/30)*



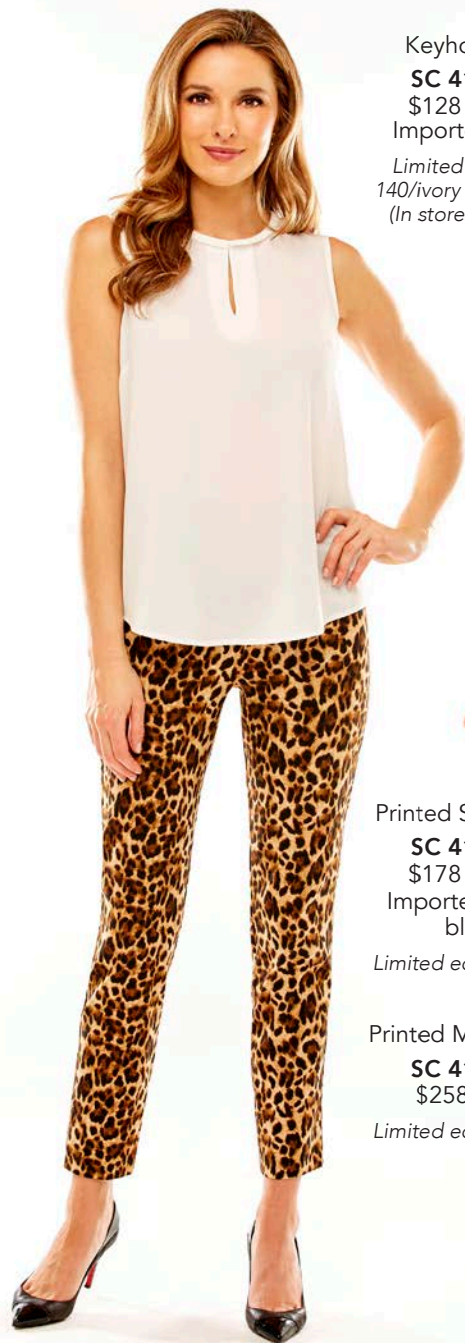
Tucked waist sheath

SC 419-220

\$228 | XS-XL

Stretch knit imported
from France

*Limited edition of 125
(In stores 8/1-8/30)*



Keyhole shell
SC 419-210
 \$128 | XS-XL
 Imported crepe

*Limited edition of
 140/ivory & 140/black
 (In stores 8/1-8/30)*

Printed Sheri Pants
SC 419-238
 \$178 | XS-XL
 Imported stretch
 blend

Limited edition of 190

Printed Magic Dress
SC 419-232
 \$258 | 0-14
Limited edition of 185



Printed Kaylie
 collar jacket
SC 419-233
 \$328 | XS-XL

*Limited edition
 of 155*

Seamed open
 drape jacket
SC 419-270
 \$298 | XS-XL
 Stretch faux
 suede imported
 from Italy

*Limited
 edition of 90
 (In stores 8/1-8/30)*

Flounce sleeve
 ruffle front shirt
SC 419-239
 \$228 | 0-14
 Cotton imported
 from Portugal

*Limited edition of
 140/white
 & 55/black
 (In stores 8/1-8/30)*



Color block A-line dress

SC 419-120

\$248 | XS-XL

Ponte from USA

*Limited edition of 140
(In stores 7/1-7/30)*



Swing top

SC 419-146

\$138 | XS-XL

Crepe imported from Italy

*Limited edition of 150
(In stores 7/1-7/30)*





Fitted riding jacket

SC 419-130

\$328 | XS-XL

Knit imported from France

Limited edition of 110

Fringe trim shift

SC 419-128

\$278 | XS-XL

Knit imported from France

*Limited edition of 65
(In stores 7/1-7/30)*



Mock neck tank

SC 419-132

\$128 | XS-XL

Waffle knit imported from Italy

Limited edition of 55/white & 55/black

Faux wrap cropped palazzo pant

SC 419-186

\$208 | XS-XL

Ponte from USA

*Limited edition of 100
(In stores 7/1-7/30)*





Patch pocket jacket
SC 419-189
 \$328 | XS-XL
 Tweed imported from
 Belgium

Limited edition of 80

Ruffle cuff boyfriend
 button-down
SC 419-141
 \$198 | XS-XL
 Cotton imported from
 Portugal

*Limited edition of 80
 (In stores 7/1-7/30)*



Fringe trim boxy T-shirt
SC 419-169
 \$218 | XS-XL
 Tweed imported from Italy

*Limited edition of 105
 (In stores 7/1-7/30)*



Drawstring neck
blouse

SC 419-242
\$198 | XS-XL
Fabric imported
from Italy

Limited edition of 80

Pencil skirt with ruffle
slit back

SC 419-248
\$158 | XS-XL
Ponte from USA

*Limited edition of 60
(In stores 8/1-8/30)*

Printed cuffed blouse

SC 419-273
\$168 | XS-XL
Fabric from USA

Limited edition of 140

High waisted wide
leg pant

SC 419-211
\$208 | 0-14
Fabric imported
from Italy

*Limited edition of 75
(In stores 8/1-8/30)*





Funnel collar top

SC 419-246
\$128 | XS-XL
Imported knit

Limited edition of 120

Palazzo pant

SC 419-261
\$178 | XS-XL
Stretch twill imported from Italy

*Limited edition of 50/tan & 60/gray
(In stores 8/1-8/30)*



Flounce sleeve sweater top

SC 419-230
\$158 | XS-XL
Knit imported from Italy

*Limited edition of
145/blue & 120/black
(In stores 8/1-8/30)*

Sheri Pant

SC 114-372
\$168 | XS-XL
Core colors: Black, navy,
stone, vanilla, white
Imported stretch blend



Pleated leather trim T-shirt

SC 419-278

\$198 | XS-XL

Tweed imported from
France

*Limited edition of 140
(In stores 8/1-8/30)*

CONNECTICUT

New Canaan

143 Elm Street
203.966.5488

FLORIDA

Delray Beach

1051 E Atlantic Avenue
561.359.2259

Old Naples

1300 Third Street South
#103B
239.331.2953

Naples

Village Shops on Venetian Bay
4252 Gulf Shore Blvd North
239.331.7678

Sarasota

1508 Main Street
941.413.5298

Vero Beach

3231 Ocean Drive
772.205.2756

Winter Park

346 North Park Avenue
321.972.1232

ILLINOIS

Lake Forest

221 E Westminster Avenue
847.234.6416

Winnetka

563 Lincoln Avenue
847.441.2813

MASSACHUSETTS

Boston

Beacon Hill
84 Chestnut Street
617.377.4054

Boston

South End (The Sale Shop)
460 Harrison Avenue Suite 5-A
857.315.5319

Chatham

578 Main Street
508.348.1702

Concord

41 Main Street
978.369.3223

Hingham

38 North Street
781.749.4792

Nantucket

5 South Beach
508.680.1626

Osterville

846 Main Street
774.361.8372

Wellesley

Linden Square
200 Linden Street
781.235.1321

MICHIGAN

Birmingham

146 W Maple Road
248.220.4255

NORTH CAROLINA

Charlotte

2906 Selwyn Avenue
980.207.3125

PENNSYLVANIA

Philadelphia

Chestnut Hill
8409 Germantown Avenue
215.381.0325

RHODE ISLAND

Newport

115 Bellevue Avenue
401.847.5700

Westerly

Watch Hill
1 Bay Street
401.637.4760

SOUTH CAROLINA

Charleston

195 1/2 King Street
843.459.2405

VIRGINIA

Alexandria

Old Town
320 Prince Street
703.996.9074

Richmond

306 Libbie Avenue
804.912.2532

WWW.SARACAMPBELL.COM

SARA CAMPBELL

67 Kemble Street
4th Floor
Boston, MA 02119
saracampbell.com